

Case History

This report is AI computer generated. Request a specialist consultation for any questions.

Patient ID
Birthdate 2011-02-24
Gender Female
Neutered Yes Species
Dog Weight 11.0

Found

Bronchial - Respiratory

Likely

Interstitial - Respiratory

Likely

Bronchopneumonia - Respiratory

Possible

Hepatomegaly - Hepatobiliary

Possible

Gastroenteritis - Gastrointestinal

Possible

Nodule or mass - Respiratory

Potential

Cardiomegaly - Cardiovascular

Potential

Left atrial enlargement - Cardiovascular

Potential

Colitis - Gastrointestinal

Potential

Checked

Mediastinum

Normal

Pleural space

Normal

Spleen

Normal

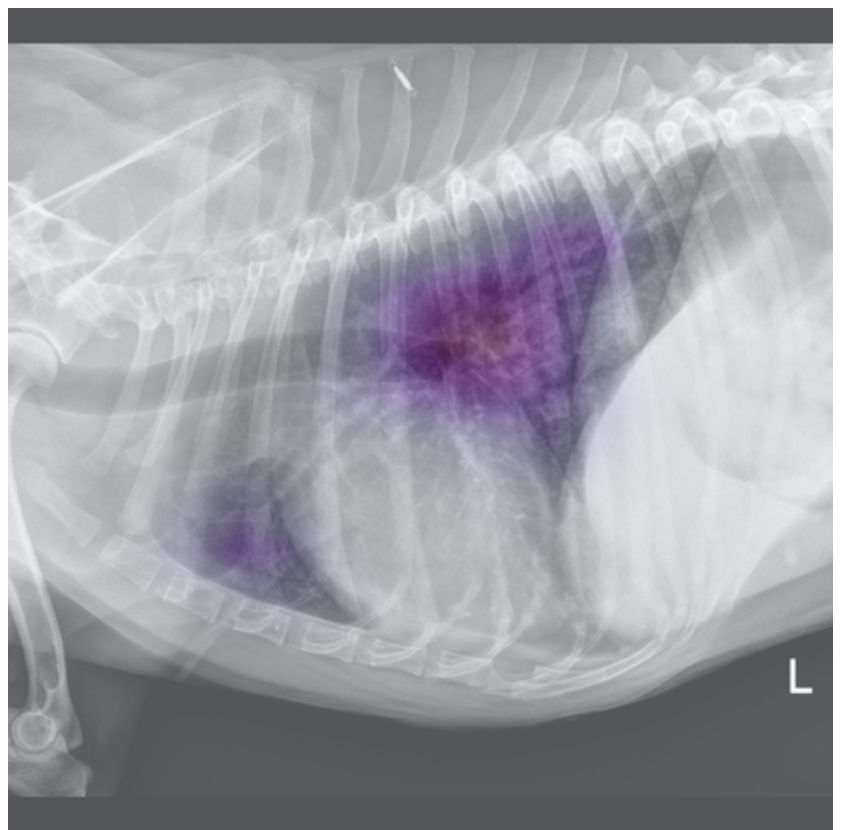
Urogenital

Normal

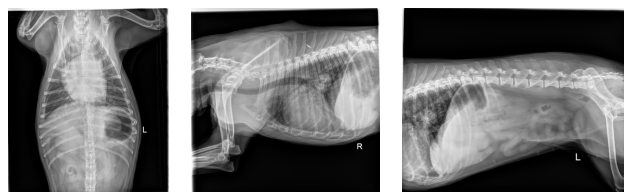
Peritoneal space

Normal

Patient Images



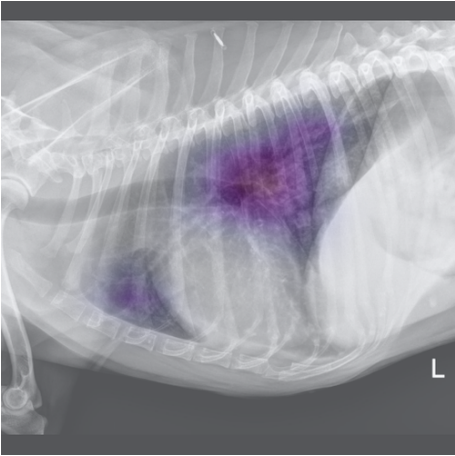
Bronchial - A pattern indicating a condition with airways.



Detailed Findings

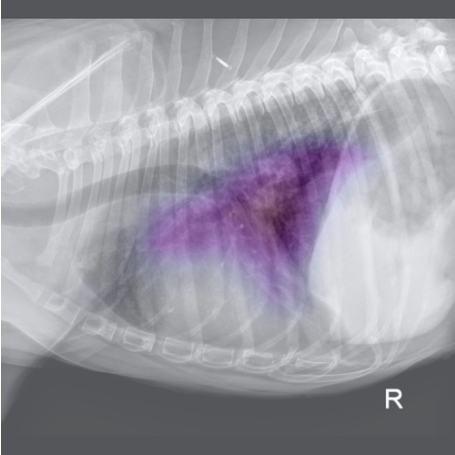
Bronchial

This likely finding was detected in 3 images.



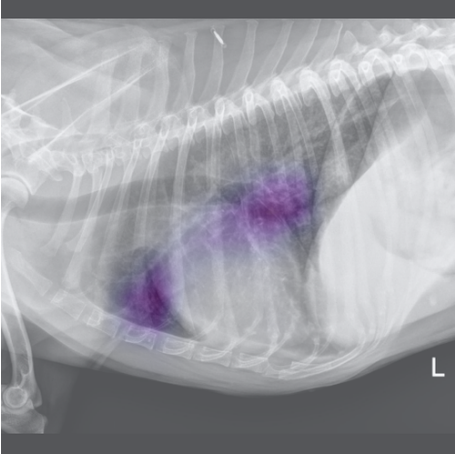
Interstitial

This likely finding was detected in 3 images.



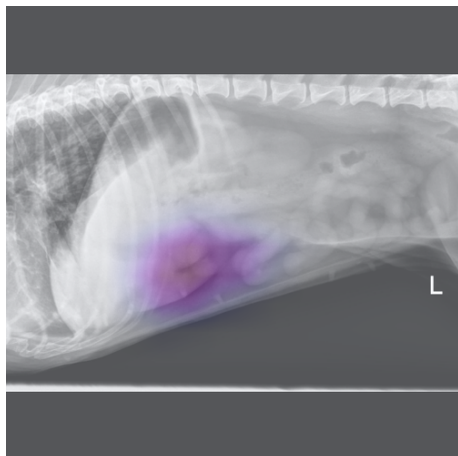
Bronchopneumonia

Repeat radiographs in 10-14 days to monitor for change. This possible finding was detected in 1 image.



Hepatomegaly

Generalized hepatomegaly is a non-specific finding. This finding should be correlated with physical examination findings and bloodwork abnormalities. General differentials include vacuolar/metabolic hepatopathy, infection, inflammation, and neoplasia. Abdominal ultrasound can be considered if clinically indicated. This possible finding was detected in 3 images.



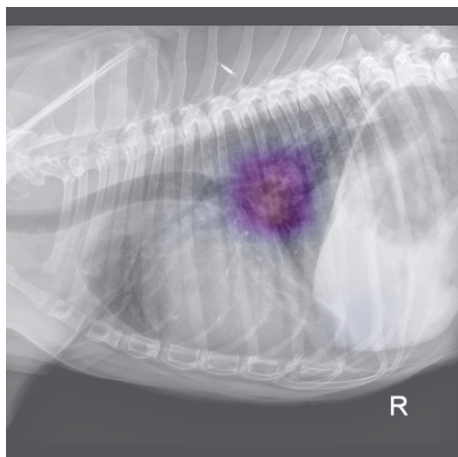
Gastroenteritis

This possible finding was detected in 3 images.



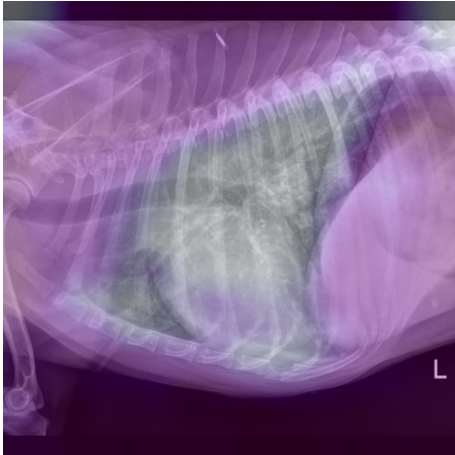
Nodule or mass

If a primary neoplasm is not known, abdominal imaging (e.g., radiographs, ultrasound) can be helpful to screen for an underlying cause. This potential finding was detected in 2 images.



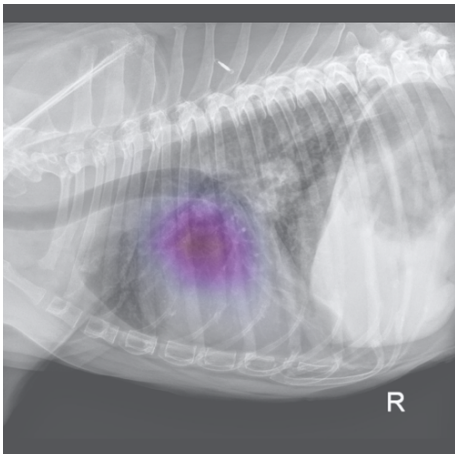
Cardiomegaly

This potential finding was detected in 1 image.



Left atrial enlargement

Most compatible with chronic valvular disease (e.g., mitral valve). Echocardiography can be considered. This potential finding was detected in 1 image.



Colitis

This potential finding was detected in 2 images.

